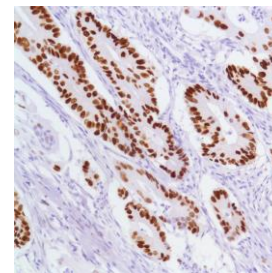




Rabbit Anti-Human p53 Monoclonal Antibody (Clone SP5)

CATALOG #:

- M3050** 0.1 ml rabbit monoclonal antibody supplied as tissue culture supernatant in TBS/1% BSA buffer pH 7.5 with less than 0.1% sodium azide.
- M3052** 0.5 ml rabbit monoclonal antibody supplied as tissue culture supernatant in TBS/1% BSA buffer pH 7.5 with less than 0.1% sodium azide.
- M3054** 1.0 ml rabbit monoclonal antibody supplied as tissue culture supernatant in TBS/1% BSA buffer pH 7.5 with less than 0.1% sodium azide.
- M3051** 7.0 ml pre-diluted rabbit monoclonal antibody supplied as tissue culture supernatant in TBS/1% BSA buffer pH 7.6 with less than 0.1% sodium azide.



Human colon carcinoma stained with anti-p53 antibody

INTENDED USE:

For Research Use Only. Not for use in diagnostic procedures.

CLONE:

SP5

IMMUNOGEN:

Recombinant human full length wild type p53 protein.

IG ISOTYPE:

Rabbit IgG

EPITOPE:

Not determined

MOLECULAR WEIGHT

53kDa

SPECIES REACTIVITY:

Human (tested). (See www.springbio.com for information on species reactivity predicted by sequence homology.)

DESCRIPTION:

p53 is a tumor suppressor gene expressed in a wide variety of tissue types and is involved in regulating cell growth, replication, and apoptosis. It binds to mdm2, SV40 T antigen and human papilloma virus E6 protein. p53 senses DNA damage and possibly facilitates repair. Mutation involving p53 is found in a wide variety of malignant tumors, including breast, ovarian, bladder, colon, lung, and melanoma.

APPLICATIONS:

Immunohistochemistry (IHC)

IHC PROCEDURE:

Specimen Preparation: Formalin-fixed, paraffin-embedded tissues are suitable for use with this primary antibody.

Deparaffinization: Deparaffinize slides using xylene or xylene alternative and graded alcohols.

Antibody Dilution: If using the concentrate format of this product, dilute the antibody 1:100. The dilutions are estimates; actual results may differ because of variability in methods and protocols.

Antigen Retrieval: Boil tissue section in 10mM citrate buffer, pH 6.0 for 10 min followed by cooling at room temperature for 20 min.

Primary Antibody Incubation: Incubate for 30 minutes at room temperature.

Slide Washing: Slides must be washed in between steps. Rinse slides with PBS/0.05% Tween.

Visualization: Detect the antibody as instructed by the instructions provided with the visualization system.

POSITIVE CONTROL:

Colon carcinoma

CELLULAR LOCALIZATION:

Nucleus

STORAGE & STABILITY

Store at 2-8°C. Do not freeze. The user must validate any other storage conditions. When properly stored, the reagent is stable to the date indicated on the label. Do not use the reagent beyond the expiration date.

There are no definitive signs to indicate instability of this product; therefore, positive and negative controls should be tested simultaneously with unknown specimens.

If unexpected results are observed which cannot be explained by variations in laboratory procedures and a problem with the reagent is suspected, contact Technical Support at spring.tech@ventana.roche.com.

WARNINGS & PRECAUTIONS:

1. Avoid contact of reagents with eyes and mucous membranes. If reagents come into contact with sensitive areas, wash with copious amounts of water.
2. This product is harmful if swallowed.
3. Consult local or state authorities with regard to recommended method of disposal.
4. Avoid microbial contamination of reagents.